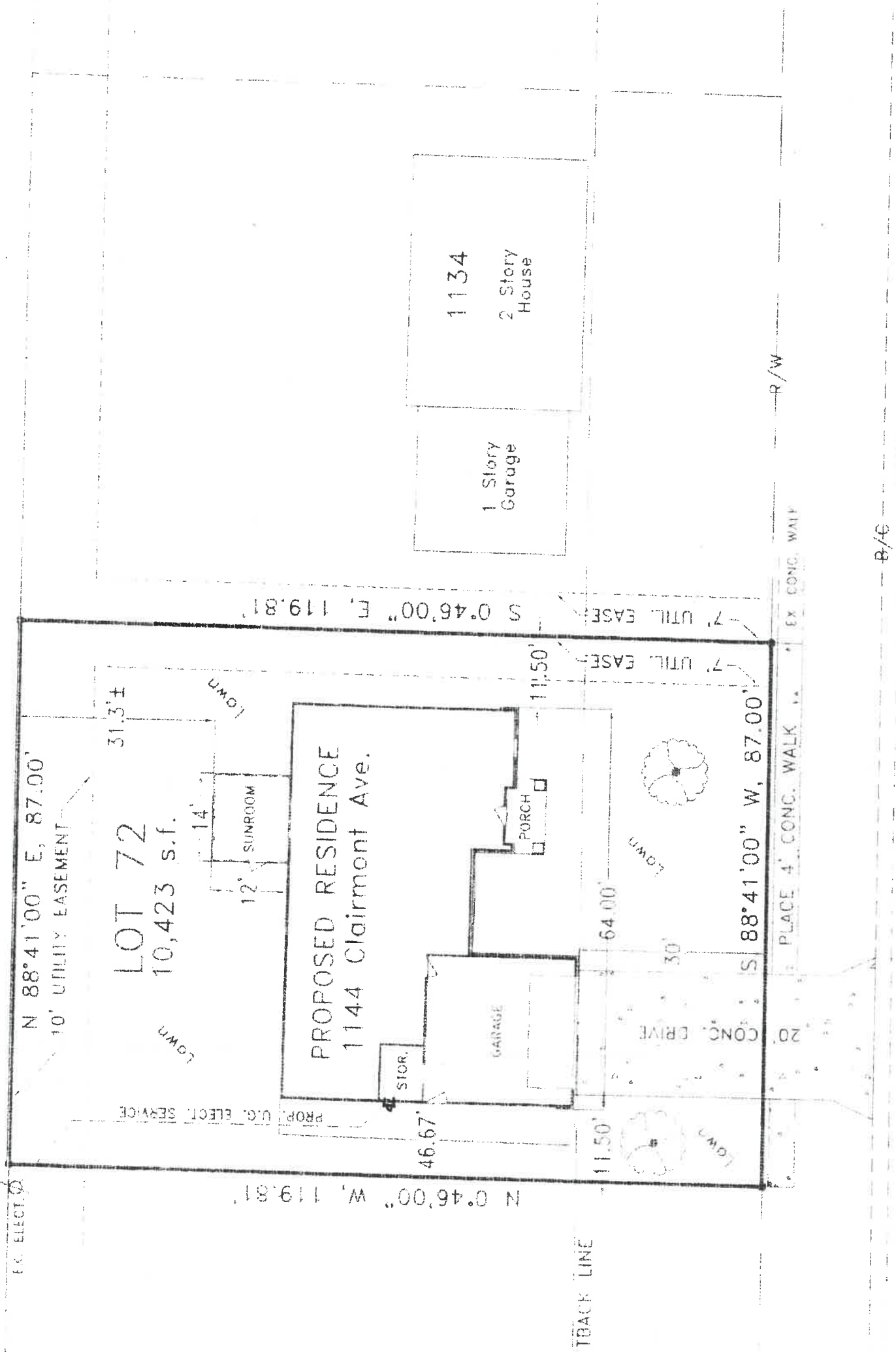


AGRICULTURAL



Clairmont Avenue ~ 60' R/W

B/E

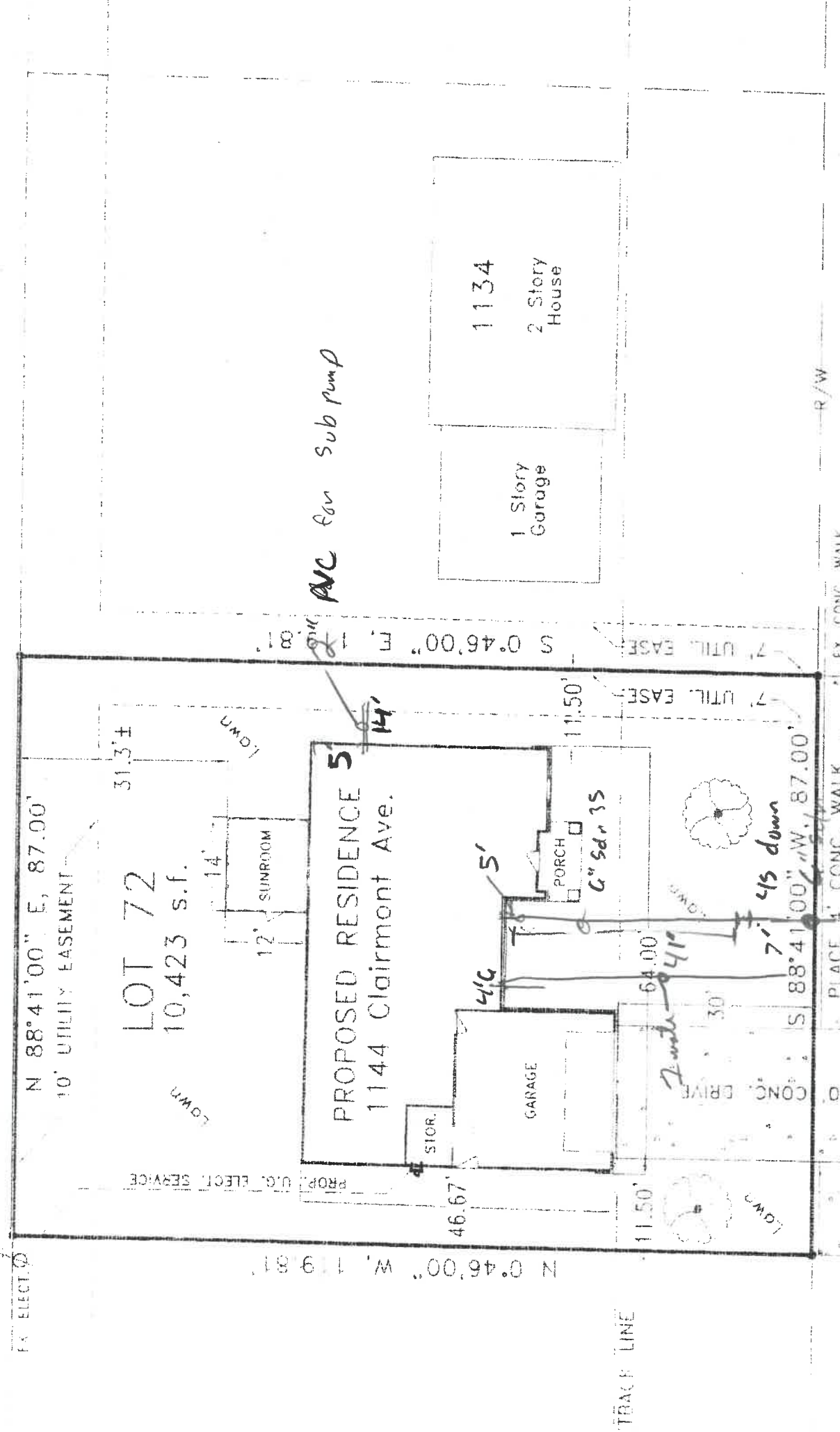
R/W

B/E

R/W

NOTE: EXISTING SITE INFORMATION TAKEN FROM INFORMATION SUPPLIED BY THE OWNER, FIELD VERIFY ALL DIMENSIONS PRIOR TO BEGINNING CONSTRUCTION.

AGRICULTURAL



*AVC for sub pump*

*6" sdr cleanout 8' deep*  
B/E

Clairmont Avenue ~ 60' R/W

B/E

R/W

NOTE: EXISTING SITE INFORMATION TAKEN FROM INFORMATION SUPPLIED BY THE OWNER, FIELD VERIFY ALL DIMENSIONS PRIOR TO BEGINNING CONSTRUCTION.

10' UT EASEMENT

CB #6 2-2B  
STA 15+59-142' RT  
681.25 TOP  
677.75-10' S

161'-10" ST @ 0.53%

70

STA. 15+63-30' RT  
6" C/D  
FL ELEV. 675.7

5+95-30' RT  
1" SHUT OFF

E CONC  
X: PV'T &  
ASPH. JT.

681.36

GRADE 16+00

12" STORM

STA 15+83-30' LT  
1" SHUT OFF

5+54-24' LT  
TEE & 8" VALVE  
VE BOX - N&E  
RESTRAINT ALL  
TIONS

STA 15+72

CLAIRMONT AVENUE (60' R/W)

14' UT EASEMENT

15+57-70' RT  
2-6"x10" INSERTA TEE  
6'-6" ST & 2-6" PLUGS  
FL ELEV. 677.7

71

MH #2  
15+55-24' RT

STA. 15+21-30' RT  
1" SHUT OFF

STA 15+10-30' RT  
6" C/D  
FL ELEV. 675.4

R/W

PROPOSED SAN

6" UD

15+00

6" UD  
PROPOSED 8" WATER

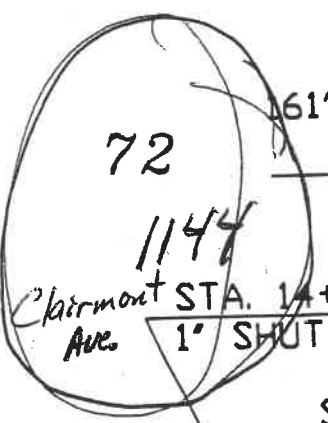
R/W

STA 15+08-30' LT  
6" C/D  
FL ELEV. 675.9

STA 14+97-30' LT  
1" SHUT OFF

STA 14+60-30' LT  
8"x6" HYD TEE &  
FIRE HYD. ASSEMBLY

STA. 14+70



72

1144

Clairmont  
Ave.

61'-10" ADS  
@ 0.62%

STA. 14+34-30' RT  
1" SHUT OFF

STA 14+23-30' RT  
6" C/D  
FL ELEV. 675.1

HYD

STA 14+20-30' LT  
6" C/D  
FL ELEV. 675.6

STA 14+09-30' LT  
1" SHUT OFF

STA 13+87  
13'-6" ST  
& 6" PLUG-30' RT  
FL ELEV. 677.9

SWALE

14' UT EASEMENT

CB #5 2-2B  
STA 13+81-142' RT  
681.3 TOP  
678.0-10' S

13+83-70' RT  
2-6x10 INSERTA TEE,  
6'-6" ST & 2-6" PLUGS  
FL ELEV. 677.7

73

STA. 13+83

MATCHLINE STA. 13+50  
SEE PAGE #3

MH 'C'  
13+82-19' LT

74